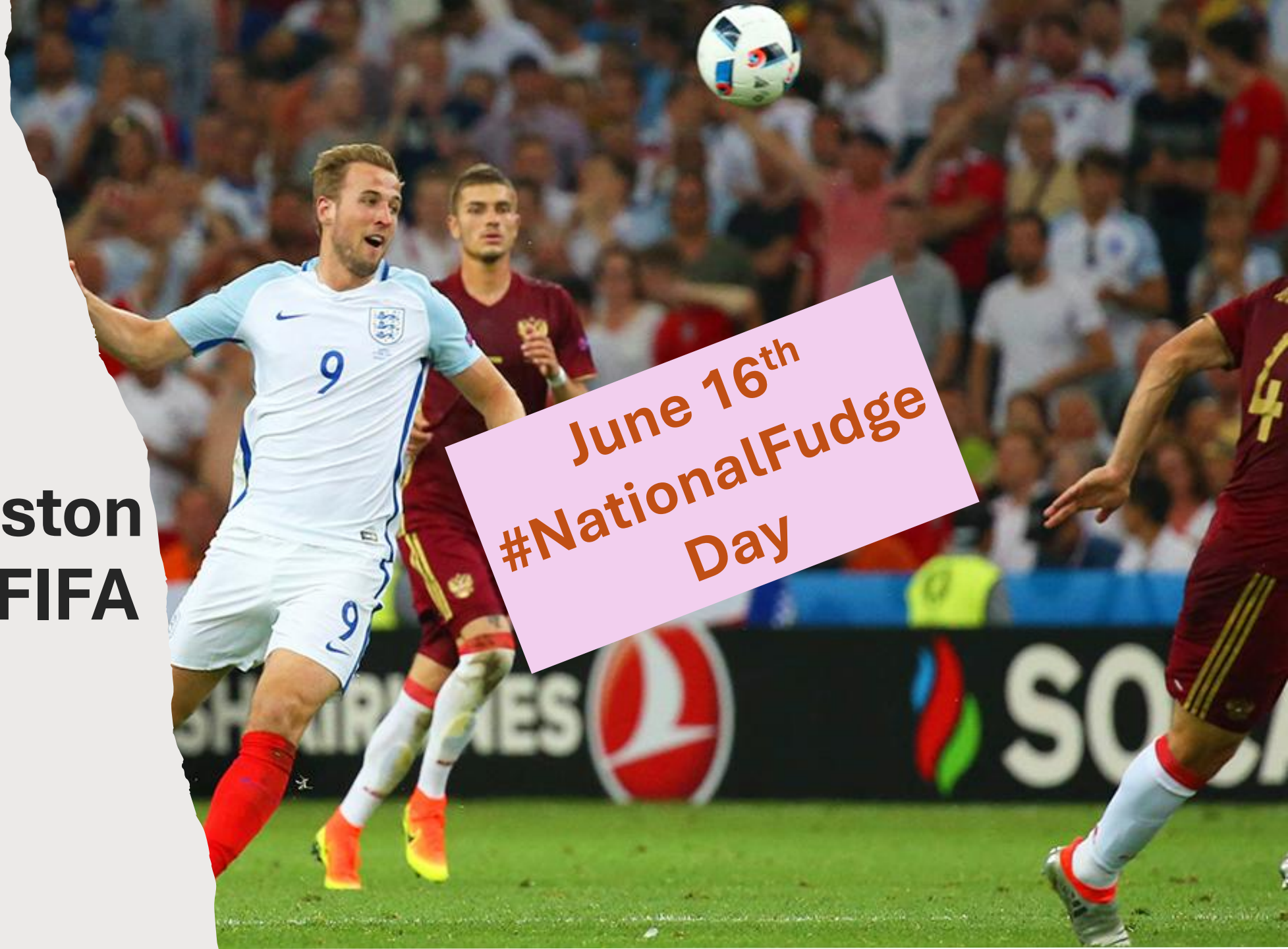


CMOC/Houston Healthcare FIFA Update

June 16, 2026



June 16th
#NationalFudge
Day



Agenda

- Activities and stats from previous 24 hours
- Activities for today and next 24 hours
 - 06/16 – Astros @ Dankin 7:10pm
 - 06/16 – Fan Fest opens at 6:30pm
 - 06/17 – 12p Portugal vs. DRC
 - 06/17 - Astros @ Dankin 1:10pm
- Situational updates/changes/weather
- Reminders
- Questions/Concerns

Activities/Stats: 6/14/2026

- Fan Fest patients:
- Stadium patients:
- Fan March patients: No scheduled games
- HFD reports: 0
- Other location patients: 0
- Hospital reported patients: 4

CANCELED DUE TO RAIN/WEATHER





Activities 6/16/26

- Houston activities
 - Fan Fest opens 6:30p Delayed weather
 - Numerous “watch parties?”
- Sugarland activities
 - None planned
- Matches
 - 2:00p France vs Senegal
 - 5:00p Iraq vs Norway
 - 8:00p Argentina vs Nigeria
 - 11:00p Austria vs Jordon

Road Closures and Traffic



- Closures may begin as much as 6 hours before the game and 2 hours after the game ends. This will affect staff arriving and departing from their shifts.
- *Slow spots to watch west/south Loop 610 (especially near the stadium), I-45 South from downtown toward NRG, US-59, and Texas 288. Secondary roads near NRG like Bellaire, West University, South Main, Fannin, and Richmond Ave*
- HPD will establish the official perimeter, we suggest you expect security perimeters similar to Rodeo or Super Bowl – these may include full or partial closures on match days of:
 - Kirby Drive (especially near McNee Rd and Westridge),
 - Fannin Street near the stadium perimeter,
 - Murworth Drive,
 - Lantern Point Drive,
 - Stadium Drive / NRG Park

**TURN AROUND
DON'T DROWN**

THE STATE OF TEXAS
COUNTY OF GALVESTON

GCOEM.ORG

6 INCHES
of moving
water can
carry away
an adult

12 INCHES
of moving
water can
carry away a
small car

18 - 24 INCHES
of moving
water can
carry away
most trucks

Detailed Forecast

- Increased chances for a short live weak tropical storm along the mid and upper TX coast mid week
- Tropical storm watches or warnings may be required today for all or portions of the mid and upper TX coast
- Potential for very heavy rainfall and flash flooding

Today:

High resolution guidance insists that a band of thunderstorms producing heavy rainfall will develop near the coast and spread somewhat inland through the midday hours. Radar is starting to show this along the coastal beaches and this is likely the start of this heavier rainfall threat for the morning into the midday hours. How far inland this activity spreads remain in question, but areas south of I-10 look to have the best chances for heavy rainfall and flash flooding through the morning hours.

Guidance shows a general decreasing trend in activity into the mid to late afternoon hours similar to Monday.

Monday Mostly sunny, with a high near 93.

Tropical Weather Update June 15th



Tropical Weather Outlook

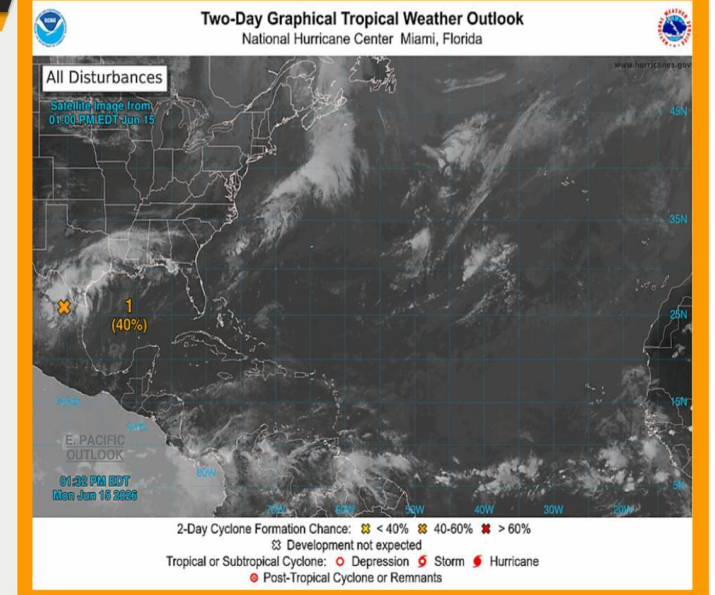
2-Day FORMATION CHANCE: **50%**

7-Day FORMATION CHANCE: **50%**

Monitoring A Disturbance

- 📍 A tropical disturbance has a Medium (50%) Chance of development over the northwestern Gulf.
- ➔ A broad area of low pressure over eastern Mexico will re-emerge over the Texas coastal waters late Tuesday or Wednesday where environmental conditions could support some development.
- ➔ Regardless of development, periods of heavy rainfall and a flash flood risk expected across Southeast Texas through Thursday.
 - ◆ Winds gusty at times Wednesday-Thursday, especially near the coast.
 - ◆ Minor coastal flooding expected Wednesday.

Monitor Forecast Updates: [weather.gov/houston](https://www.weather.gov/houston)



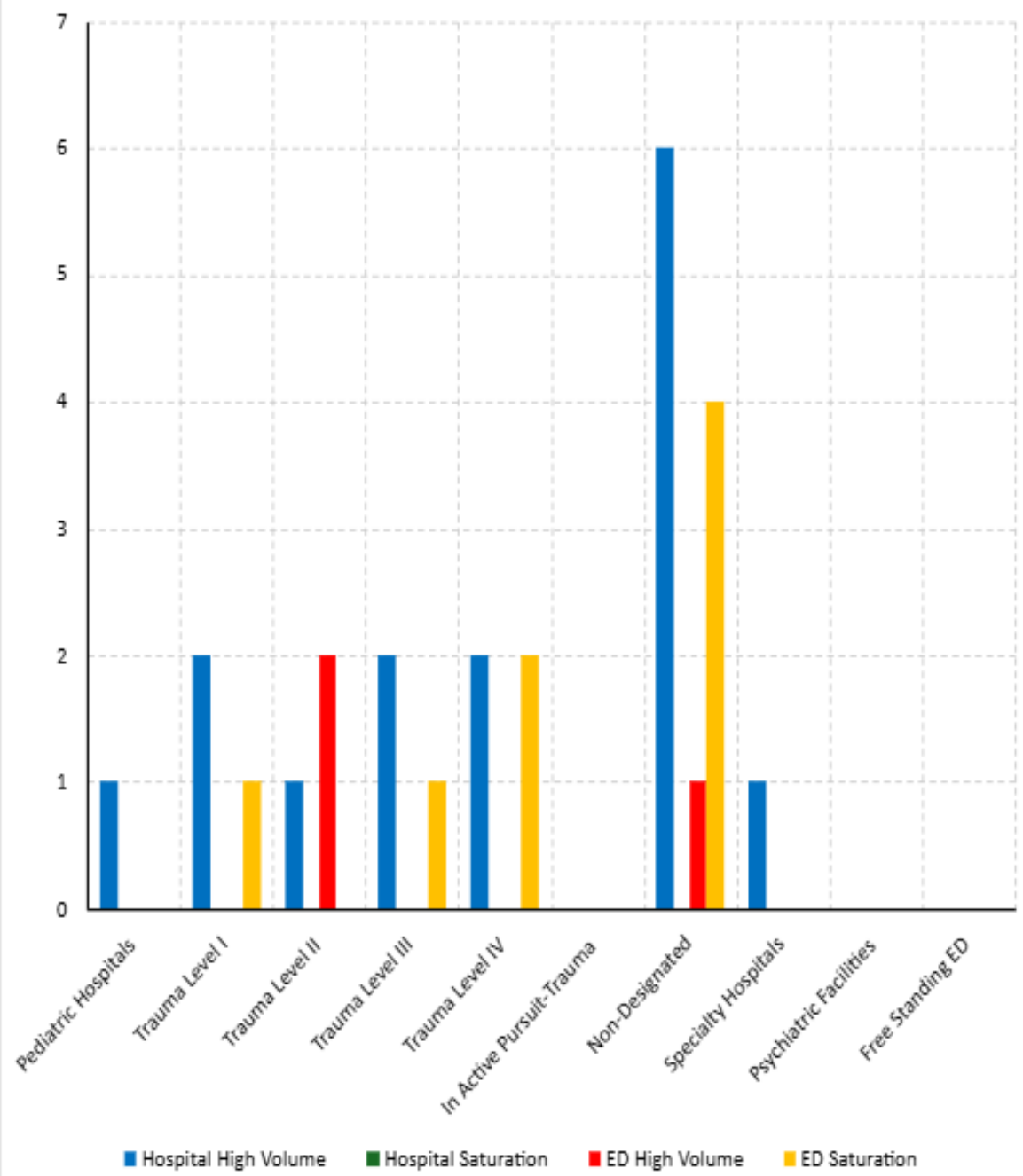
NATIONAL WEATHER SERVICE
Houston/Galveston, TX

Follow: @NWSHouston

Updated: 9 PM Jun. 15, 2026

Region Q Status Pivot Summary

Source Tab	Hospital High Volume	Hospital Saturation	ED High Volume	ED Saturation
Pediatric Hospitals	1	0	0	0
Trauma Level I	2	0	0	1
Trauma Level II	1	0	2	0
Trauma Level III	2	0	0	1
Trauma Level IV	2	0	0	2
In Active Pursuit-Trauma	0	0	0	0
Non-Designated	6	0	1	4
Specialty Hospitals	1	0	0	0
Psychiatric Facilities	0	0	0	0
Free Standing ED	0	0	0	0
Total	15	0	3	8



Ebola Updates

- As of June 13th – DRC has 782 confirmed cases w/178 confirmed deaths
 - Uganda reported 19 confirmed with 2 confirmed deaths
 - No confirmed in the US
 - **RISK TO PUBLIC REMAINS LOW!**
-
- **As of the report on 6/13/2026:**
 - 235 PUM in Texas
 - 48 in SETRAC region
 - **Regional IDRU plans in place**



Reported PUMs in Texas by Country of Travel

Countries	# of PUMs	% of PUMs
Democratic Republic of Congo	55	23.4%
South Sudan	8	3.4%
Uganda	167	71.1%
Multiple Countries	5	2.1%
Grand Total	235	100.0%

Ebola Update

(continued)

- What is a PUM?

An individual undergoing monitoring by public health officials is considered a Person Under Monitoring (PUM). The PUMs in this Ebola outbreak are individuals who have **potentially been exposed to the Bundibugyo virus or have recently traveled to countries affected by the current Bundibugyo virus disease outbreak** as identified by the United States Department of Health and Human Services.

Monitoring persons with potential exposure to Bundibugyo virus for symptoms of BVD helps ensure that an individual who becomes ill is identified as soon as possible after symptom onset, so that he or she can be rapidly isolated and evaluated.

Currently, these definitions and risk categories only apply to travelers from the Democratic Republic of Congo (DRC), South Sudan, and Uganda. As this is an ongoing and evolving outbreak, the definitions and risk categories are subject to change.

Affected countries refers to those countries currently affected by the outbreak of BVD.

- o DRC
- o South Sudan
- o Uganda



MISSING PERSONS REPORT

- As FIFA is heating up, we want to provide a very straightforward and easy process to report missing persons should someone arrive at your facility looking for a sick or injured person. (Related to the FIFA World Cup)
- We are providing access to a form that is available in multiple languages to assist with reporting a missing person. NOTE, this is meant to be utilized if the missing person is presumed to be part of the FIFA event, as either a participant or a fan.
- The steps to follow if someone comes to your facility looking for a missing person are:
 1. Determine if the missing person is at your facility and follow your normal process for reunification if they are located at your facility.
 2. IF they are not at your facility, utilize the missing persons form found at this URL
- [SETRAC FIFA missing persons](#)



Or this QR Code can be provided for ease of access on a mobile device. The reporting party can leverage this QR Code if necessary as it can be changed to multiple languages and allows for uploading pictures of the missing person etc.

SETRAC FIFA Missing Persons



QR

Reminders

- Pulsara
- CMOC email: cmoc@setrac.org
- CMOC 24/7 number: 281-822-4444 option 2



Questions/Concerns



- CMOC@setrac.org
- 281-822-4444
option 2