

# CMOC/Houston Healthcare FIFA Update

June 14, 2026





# Agenda

- Activities and stats from previous 24 hours
- Activities for today and next 24 hours
- Situational updates/changes/weather
- Reminders
- Questions/Concerns

# Situational Updates

- Fan Fest
- Fan March
- Games
- Other Activities
- Road Closures
- Weather



# Activities/Stats: 6/13/2026

---

- Fan Fest patients:
  - 25 Contacts – 19 treated in MMU
  - Transports from MMU: 0
  - FF daily count : 7500
  - Shell Energy Stadium: 10,200
  - Sugarland: 2626 (2 medical contacts/1 transport)
- Stadium patients: 0
- Fan March patients: 0
- HFD transports: - 0
- Other location patients: 0
- Hospital reported patients: 7





# Activities 6/14/26

---

- Houston activities
  - Fan Fest opens 10:30
  - Numerous “watch parties”
- Sugarland activities
  - None planned
- Matches
  - 12p – Germany vs Curacao\*
  - 3pm – Netherlands vs Japan (Dallas)
  - 6pm – Ivory Coast vs Ecuador
  - 9pm – Sweden vs Tunisia



# Activities 6/14/26

---

- Houston activities
  - 10am – No Kings at City Hall
  - 12p-9p – Super Soccer Sunday Fest at Midtown Park
  - 4p-8p- Pitch Live in EADO – Sunday Funday featuring B-Bun, Paul Wall, Slim Thug, Z-Ro, and Lil Keke

# Road Closures and Traffic

---

- Closures may begin as much as 6 hours before the game and 2 hours after the game ends. This will affect staff arriving and departing from their shifts.
- *Slow spots to watch west/south Loop 610 (especially near the stadium), I-45 South from downtown toward NRG, US-59, and Texas 288. Secondary roads near NRG like Bellaire, West University, South Main, Fannin, and Richmond Ave*
- HPD will establish the official perimeter, we suggest you expect security perimeters similar to Rodeo or Super Bowl – these may include full or partial closures on match days of:
  - Kirby Drive (especially near McNee Rd and Westridge),
  - Fannin Street near the stadium perimeter,
  - Murworth Drive,
  - Lantern Point Drive,
  - Stadium Drive / NRG Park



Concern of  
the day...  
HEAT

National  
Weather  
Service

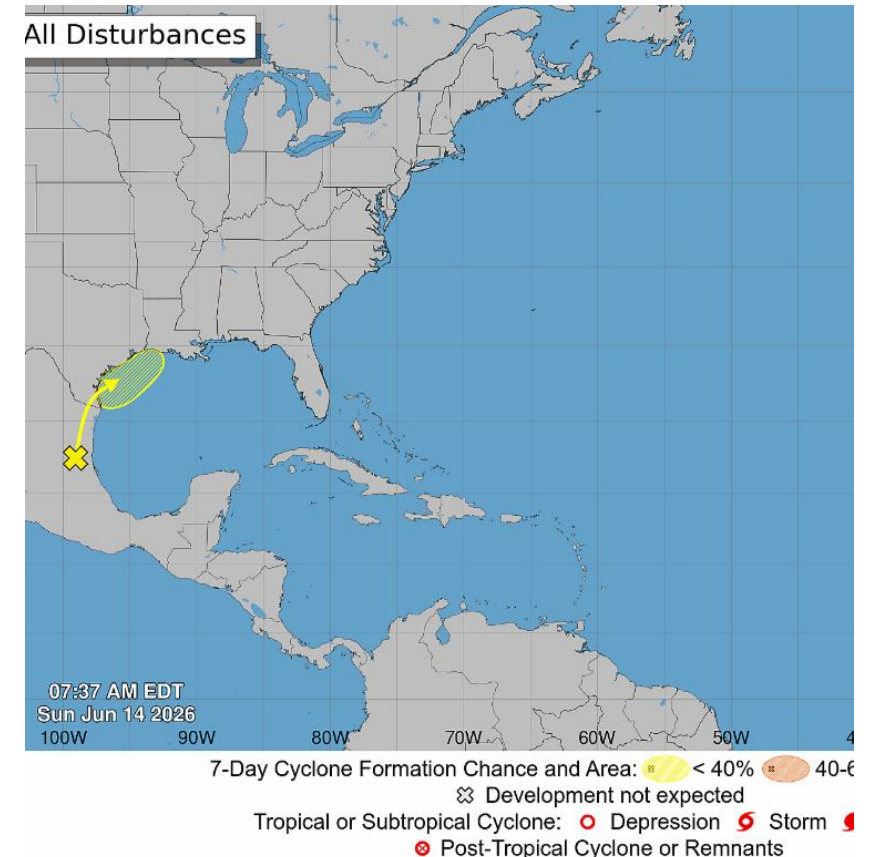


## Detailed Forecast

<b>Today</b>	A 20 percent chance of showers and thunderstorms after 11am. Mostly sunny, with a high near 94. Heat index values as high as 103. Light southeast wind increasing to 5 to 10 mph in the morning. Winds could gust as high as 20 mph.
<b>Tonight</b>	Partly cloudy, with a low around 80. South wind 5 to 10 mph, with gusts as high as 20 mph.
<b>Sunday</b>	Showers and thunderstorms likely, mainly between 3pm and 4pm, then showers likely and possibly a thunderstorm after 4pm. Mostly sunny, with a high near 93. Heat index values as high as 107. South wind around 5 mph. Chance of precipitation is 60%. New rainfall amounts between a tenth and quarter of an inch, except higher amounts possible in thunderstorms.
<b>Sunday Night</b>	Showers likely and possibly a thunderstorm before 7pm, then showers likely and possibly a thunderstorm after 1am. Partly cloudy, with a low around 79. South wind 5 to 10 mph. Chance of precipitation is 60%.
<b>Monday</b>	Showers and possibly a thunderstorm. High near 89. Calm wind becoming south around 5 mph in the afternoon. Chance of precipitation is 90%.
<b>Monday Night</b>	Showers and possibly a thunderstorm. Low around 76. Chance of precipitation is 90%.
<b>Tuesday</b>	Showers and possibly a thunderstorm before 1pm, then a chance of showers and thunderstorms after 1pm. High near 84. Chance of precipitation is 90%.
<b>Tuesday Night</b>	A 30 percent chance of showers and thunderstorms after 1am. Mostly cloudy, with a low around 76.
<b>Wednesday</b>	A 40 percent chance of showers and thunderstorms. Partly sunny, with a high near 88.
<b>Wednesday Night</b>	A slight chance of showers and thunderstorms. Partly cloudy, with a low around 79. Chance of precipitation is 20%.
<b>Thursday</b>	A 40 percent chance of showers and thunderstorms. Partly sunny, with a high near 91.
<b>Thursday Night</b>	A 30 percent chance of showers and thunderstorms. Partly cloudy, with a low around 80.
<b>Juneteenth</b>	A 30 percent chance of showers and thunderstorms. Partly sunny, with a high near 91.

# Tropical Weather Update June 14<sup>th</sup>

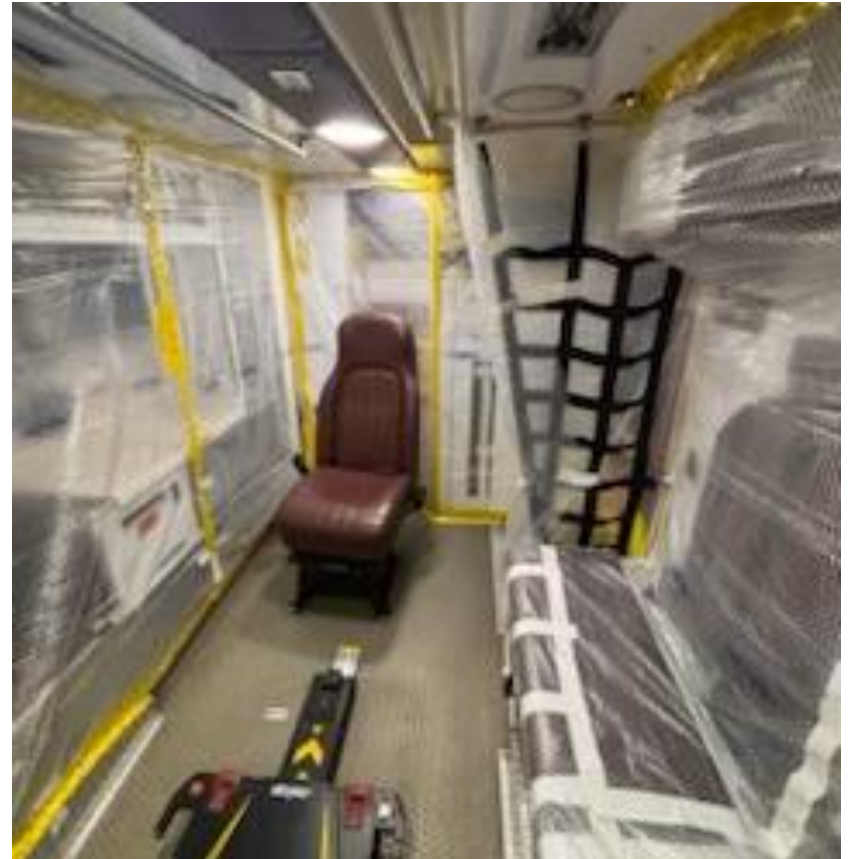
- **Heavy rainfall threat is increasing for much of this week**
- **Potential for flash flooding as weak tropical disturbance and a stalled front combine over the area**
- **Major concern: heavy rainfall, gusty winds, lightening, potential for street flooding**
- Broad area of surface low pressure has moved inland along the eastern coast of Mexico south of the TX border, however a large plume of tropical moisture is currently surging into much of the Texas coast as noted by an increase in offshore and coastal showers this morning. Across OK a frontal boundary is slowly moving southward with widespread thunderstorms along this boundary. This feature will continue to move south into N TX today and into our area on Monday. Weak surface/mid level reflection over northeast MX will slowly lift northward with time toward southern Texas and then begin to interact with the frontal boundary stalled over the area Tues-Wed.
- Widespread rainfall totals of 2-4 inches will be common with isolated amounts upwards of 6 inches possible. These totals may need to be raised in future forecasts as it becomes more defined how the various factors will evolve over the next several days. Given the very high moisture forecasts through mid week, hourly rainfall rates of 2-4 inches will be possible which will lead to rapid street flooding. Grounds will also saturate over time yielding greater run-off potential.



# Ebola Updates

---

- As of June 10<sup>th</sup> – DRC has 676 confirmed cases w/136 confirmed deaths
- Uganda reported 19 confirmed with 2 confirmed deaths
- No confirmed in the US
- **RISK TO PUBLIC REMAINS LOW!**
  
- As of the report on 6/13/2026:
  - 229 PUM in Texas
  - 46 in SETRAC region
  
- Regional IDRU plans in place



# Ebola Update

(continued)

- What is a PUM?

An individual undergoing monitoring by public health officials is considered a Person Under Monitoring (PUM). The PUMs in this Ebola outbreak are individuals who have **potentially been exposed to the Bundibugyo virus or have recently traveled to countries affected by the current Bundibugyo virus disease outbreak** as identified by the United States Department of Health and Human Services.

Monitoring persons with potential exposure to Bundibugyo virus for symptoms of BVD helps ensure that an individual who becomes ill is identified as soon as possible after symptom onset, so that he or she can be rapidly isolated and evaluated.

Currently, these definitions and risk categories only apply to travelers from the Democratic Republic of Congo (DRC), South Sudan, and Uganda. As this is an ongoing and evolving outbreak, the definitions and risk categories are subject to change.

Affected countries refers to those countries currently affected by the outbreak of BVD.

- o DRC
- o South Sudan
- o Uganda



# MISSING PERSONS REPORT

- As FIFA is heating up, we want to provide a very straightforward and easy process to report missing persons should someone arrive at your facility looking for a sick or injured person. (Related to the FIFA World Cup)
- We are providing access to a form that is available in multiple languages to assist with reporting a missing person. NOTE, this is meant to be utilized if the missing person is presumed to be part of the FIFA event, as either a participant or a fan.
- The steps to follow if someone comes to your facility looking for a missing person are:
  1. Determine if the missing person is at your facility and follow your normal process for reunification if they are located at your facility.
  2. IF they are not at your facility, utilize the missing persons form found at this URL
- [SETRAC FIFA missing persons](#)



Or this QR Code can be provided for ease of access on a mobile device. The reporting party can leverage this QR Code if necessary as it can be changed to multiple languages and allows for uploading pictures of the missing person etc.

SETRAC FIFA Missing Persons



QR

# Reminders

- Pulsara
- CMOC email: [cmoc@setrac.org](mailto:cmoc@setrac.org)
- CMOC 24/7 number: 281-822-4444 option 2



# Questions/Concerns



- [CMOC@setrac.org](mailto:CMOC@setrac.org)
- 281-822-4444  
option 2