

★ ★ ★ ★ ★

# FIFA WORLD CUP HOUSTON

UNITED BY PASSION. H-TOWN PROUD.



## CMOC/Houston Healthcare FIFA Update

June 20, 2026



ONE CITY. ONE GOAL.

*ONE WORLD.*

DAY #10 of World Cup



# Agenda

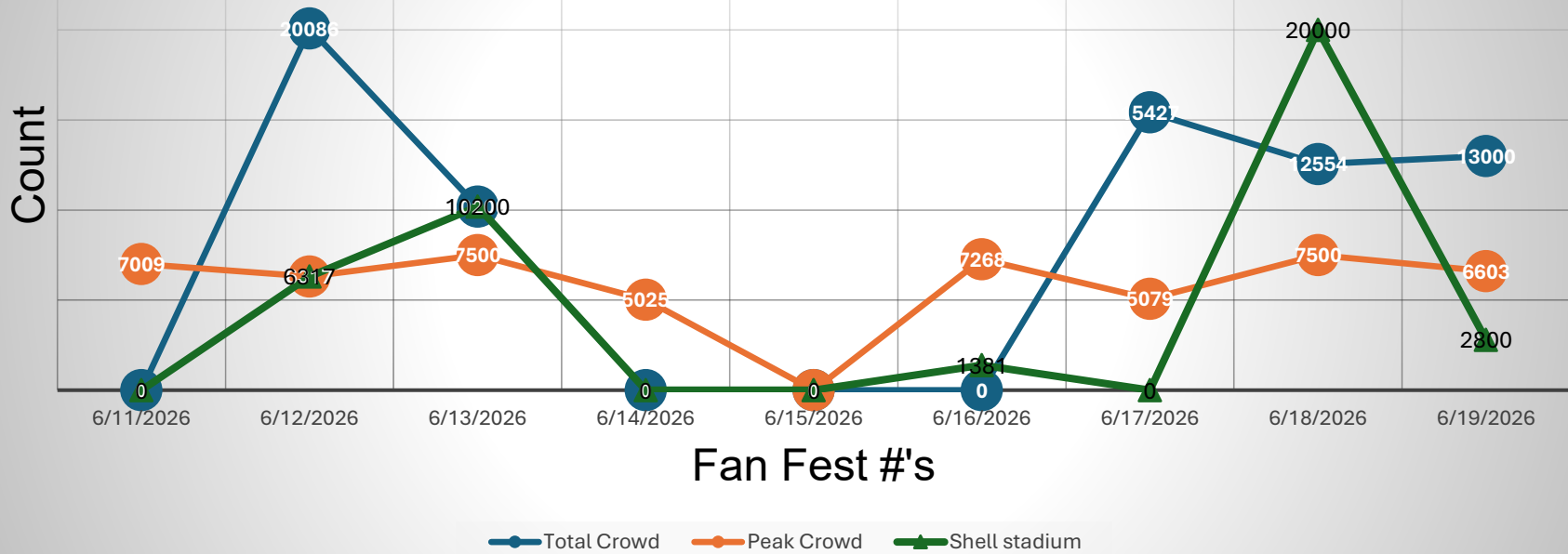
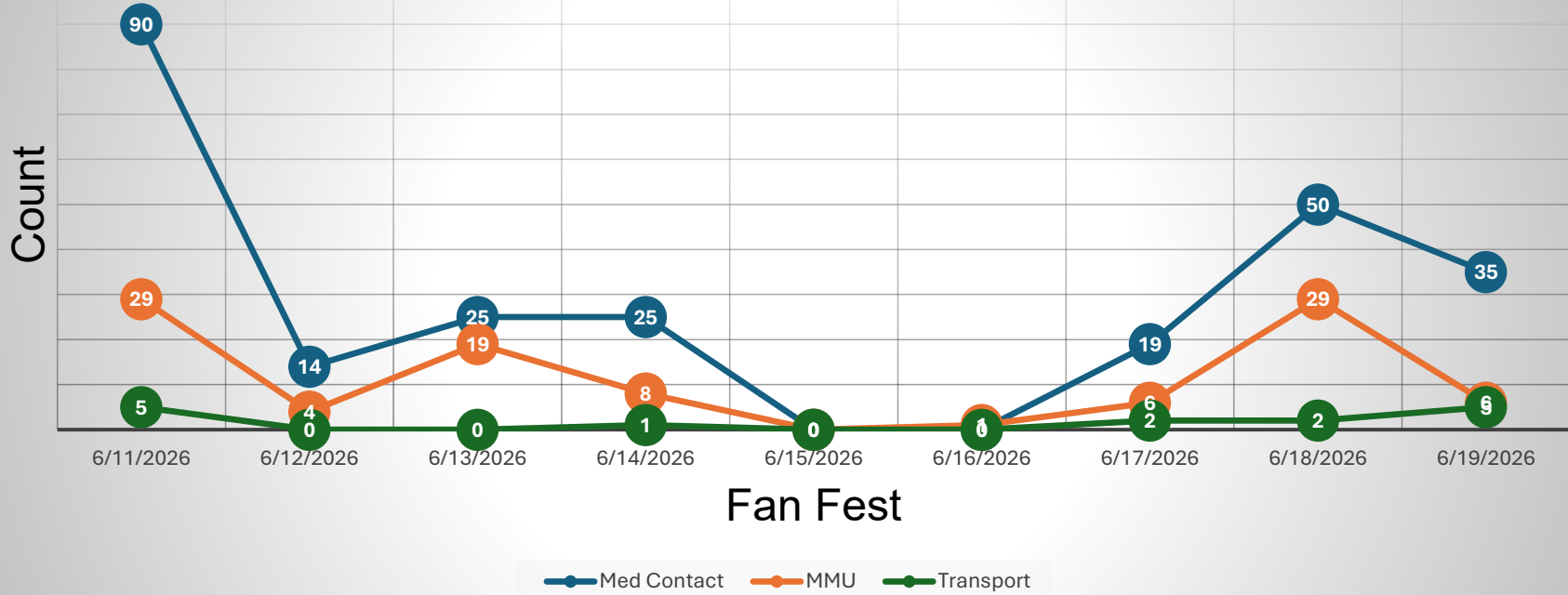


- Activities and Stats From Previous 24 hours (6/19)
- Activities For Today (6/20)
  - 10:30a Fan Fest opens
  - **12p Netherlands vs. Sweden**
  - 3p Germany vs. Cote d'Ivoire
  - 7p Ecuador vs. Curacao
  - 11p Tunisia vs. Japan
- Situational Updates/Changes/Weather
- Reminders
- Questions/Concerns

# Activities/Stats: 6/19/2026 (Previous 24 Hours)

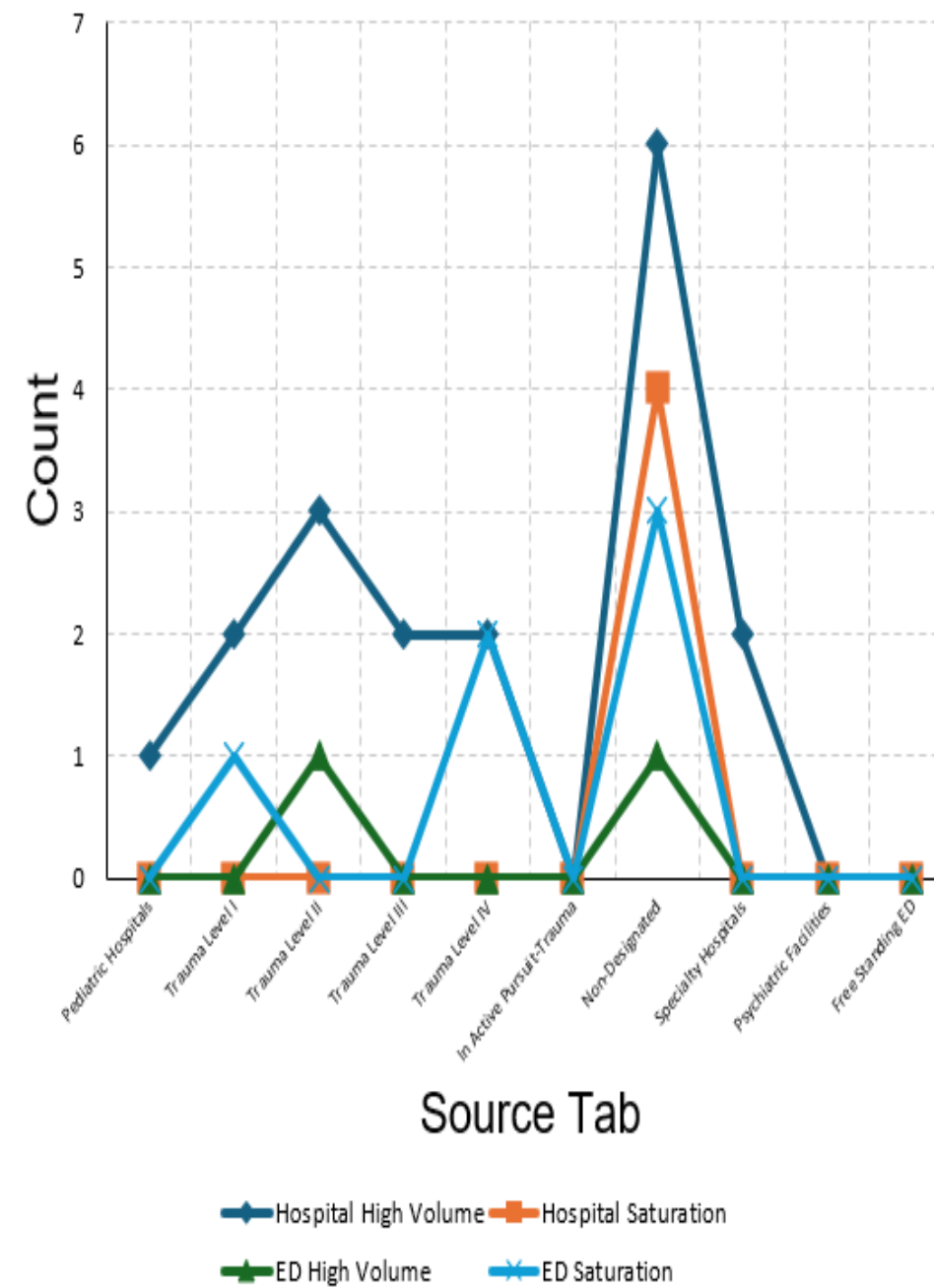
- Fan Fest:
  - Crowd – 6,603 peak (13,000 total through out the day)
  - 35 medical contact, 28 MMU pts w/5 transports
    - 28 heat related contacts
  - Closed from 1820 to 2000hrs for lighting
  - Shell Stadium – 2,800 fans
  - 1 arrest for bootlegged merch, 1 drug arrest @ gate
  - JHAT trigger construction truck, moved
- Stadium: **12p match time**
  - Crowd: X
  - Arrest: X
  - Physical security: X
  - Medical: X contact, X transported
  - Mile March Patients: N/A (06/20/2026 1<sup>st</sup> in Houston)
- HFD transports: x
- Other location patients: unknown
- Hospital reported patients: X





# Status Pivot Summary Region Q-H-R

Source Tab	Hospital High Volume	Hospital Saturation	ED High Volume	ED Saturation
Pediatric Hospitals	1	0	0	0
Trauma Level I	2	0	0	1
Trauma Level II	3	0	1	0
Trauma Level III	2	0	0	0
Trauma Level IV	2	0	0	2
In Active Pursuit-Trauma	0	0	0	0
Non-Designated	6	4	1	3
Specialty Hospitals	2	0	0	0
Psychiatric Facilities	0	0	0	0
Free Standing ED	0	0	0	0
<b>Total</b>	<b>18</b>	<b>4</b>	<b>2</b>	<b>6</b>



Display Size

Large

Active

Owner

Parent

FIFA WORLD CUP 2026

Last refreshed: 07:55:33

	None	White	Green	Yellow	Red	Black	Total
<b>Total</b>	4	6	24	3	0	0	37
On Scene	0	0	1	1	0	0	2
En Route	1	0	10	0	0	0	11
At Destination	3	6	13	2	0	0	24

Yesterday - 33

Destinations Missions

	None	White	Green	Yellow	Red	Black	Total
▶ Expand All							
▶ FIFA FANFEST - EADO 2026	1	0	2	0	0	0	3
▶ FIFA FANFEST - SUGAR LAND	0	0	0	0	0	0	0
▶ FIFA FUTBOL - THE WOODLANDS	0	0	0	0	0	0	0
▶ FIFA GENERAL OPERATIONS/OTHER	1	6	11	1	0	0	19
▶ FIFA MILE MARCH 6/20/26	0	0	0	0	0	0	0
▶ FIFA SETRAC General Game Day	0	0	2	1	0	0	3
▶ Germany v Curacao 6/14/26 Houston Stadium	0	0	6	1	0	0	7
▶ Portugal v Congo DR 06/17/26 Houston Stadium	2	0	3	0	0	0	5
▶ SETRAC FIFA Missing Persons	0	0	0	0	0	0	0

Display Size

Large

Active

World Cup Houston- HFD- Fan Fest Clinic- MMU 06192026

Last refreshed: 07:53:47

	None	White	Green	Yellow	Red	Black	Total
<b>Total</b>	0	14	1	5	0	0	20
On Scene	0	14	0	2	0	0	16
En Route	0	0	1	2	0	0	3
At Destination	0	0	0	1	0	0	1

	None	White	Green	Yellow	Red	Black	Total
▶ Expand All							
<b>No Destination</b>	0	14	0	2	0	0	16
▶ Hou. Methodist TMC HOSPITAL	0	0	0	1	0	0	1
▶ Mem. Hermann - Southwest HOSPITAL	0	0	0	1	0	0	1
▶ Mem. Hermann Texas Medical Center HOSPITAL	0	0	1	1	0	0	2





# Activities For Today

## 6/20/26

- **Houston** – *“Where soccer meets Texas sized operations, logistics, and hospitality”*
  - 8:45a Netherlands Fan March
  - 9a Market Square Minis
  - 9:30a Sweden Fan March
  - 10:30a Mid-Summer Lights @ Fan Fest
  - 12p Netherlands vs. Sweden
  - 12p Summer Saturdays @ Aquarium
  - 3p Germany vs Ivory Coast
  - 6:15p Astros vs. Guardians
  - 6:30p DRC @ Houston training center
  - 7p Ecuador vs. Curacao
  - 11p Tunisia vs. Japan
  - VVIP – King and Queen of Netherlands along with President of FIFA



## FIFA fact of the day

- USA has never won FIFA World Cup
- Best USA finish is semifinals (3<sup>rd</sup>) place in 1930
- 1950 USA beat heavily favored England 1-0 as of the greatest upsets



# ROAD CLOSURES AND TRAFFIC



Closures may begin as much as 6 hours before the game and 2 hours after the game ends. This will affect staff arriving and departing from their shifts.

Slow spots to watch west/south Loop 610 (especially near the stadium), I-45 South from downtown toward NRG, US-59, and Texas 288. Secondary roads near NRG like Bellaire, West University, South Main, Fannin, and Richmond Ave

HPD will establish the official perimeter, we suggest you expect security perimeters similar to Rodeo or Super Bowl – these may include full or partial closures on match days of: Kirby Drive (especially near McNee Rd and Westridge), Fannin Street near the stadium perimeter, Murworth Drive, Lantern Point Drive, Stadium Drive / NRG Park



# NATIONAL WEATHER SERVICE

## Heavy Rain Possible Today

Stay Weather Aware.  
Have Multiple Ways to Receive Alerts.  
Latest info at [weather.gov/houston](http://weather.gov/houston)

## Flash Flooding Possible

### Key Messages

- Showers and storms possible this morning and afternoon as a disturbance moves through the region.
- **Slight Risk (level 2 of 4)** of heavy rainfall for areas north of I-10 and east of College Station
- **Marginal Risk (level 1 of 4)** for remaining areas across Southeast Texas.

### Potential Impacts

- Flash flooding is possible, especially in areas with saturated grounds.
- Frequent lightning and gusty winds.

### Actions

- Have multiple ways to receive warnings!
- Remain weather-aware and check the forecast for updates!

## Excessive Rainfall Outlook: Saturday



Probability of excessive rainfall leading to flash flooding\*

**Marginal Risk**

At least 5%

**Slight Risk**

At least 15%

**Moderate Risk**

At least 40%

**High Risk**

At least 70%

\*Within 25 miles of a point. May not represent localized flooding threat over burn scars



[weather.gov/Houston](http://weather.gov/Houston)

National Weather Service · Houston/Galveston, TX

Follow:   @NWSHouston

Updated: Sat Jun 20, 2026 3:09 AM

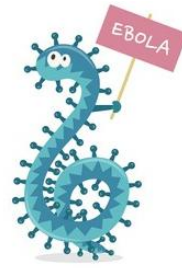


# NATIONAL WEATHER SERVICE

NATIONAL OCEANIC AND ATMOSPHERIC ADMINISTRATION

National  
Weather  
Service

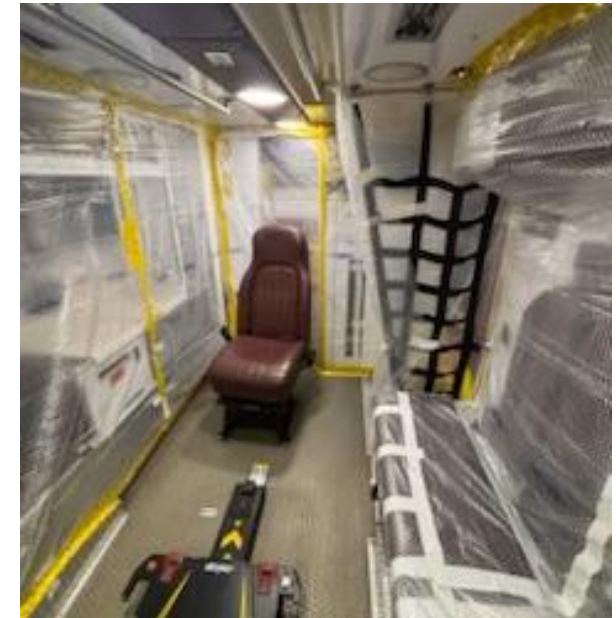
# Ebola Updates



- As of June 18<sup>th</sup> – DRC has 875 confirmed cases w/202 confirmed deaths
- Uganda reported 19 confirmed with 2 confirmed deaths w/ 1 probable case and 1 probable death
- No confirmed in the US

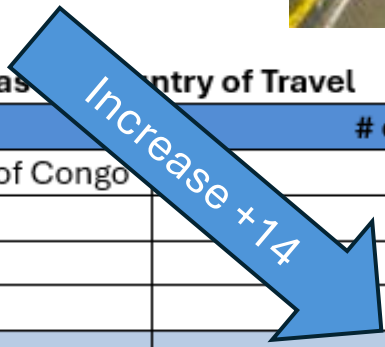
## RISK TO PUBLIC REMAINS LOW!

- As of the report on 6/19/2026:
  - 275 PUM in Texas
  - 50 in SETRAC 25 county region (18%)
  - **Regional IDRU plans in place**



Reported PUMs in Texas by Country of Travel

Countries	# of PUMs	% of PUMs
Democratic Republic of Congo	86	31.3%
South Sudan	6	2.3%
Uganda	175	63.6%
Multiple Countries	8	2.9%
<b>Grand Total</b>	<b>275</b>	<b>100.0%</b>



# FIFA MISSING PERSONS REPORT

Should someone arrive at your facility looking for a sick or injured person. (Related to the FIFA World Cup)

We are providing access to a form that is available in multiple languages to assist with reporting a missing person.

**NOTE: This is meant to be utilized if the missing person is presumed to be part of the FIFA event, as either a participant or a fan.**

Steps to follow if someone comes to your facility looking for a missing person:

1. Determine if the missing person is at your facility and follow your normal process for reunification if they are located at your facility.
2. If they are not at your facility, utilize the missing persons form found at this URL.

Questions? Hospital can contact SETRAC by calling our on-call duty officer (281) 822-4444 Option 2, or email [cmoc@setrac.org](mailto:cmoc@setrac.org)



Or this QR Code can be provided for ease of access on a mobile device. The reporting party can leverage this QR Code if necessary as it can be changed to multiple languages and allows for uploading pictures of the missing person etc.

SETRAC FIFA Missing Persons



# Reminders

- Pulsara
- CMOC email: [cmoc@setrac.org](mailto:cmoc@setrac.org)
- CMOC 24/7 number: 281-822-4444 option 2



DID YA  
KNOW?



# Questions/Concerns



- [CMOC@setrac.org](mailto:CMOC@setrac.org)
- 281-822-4444  
option 2