



FIFA
WORLD CUP
HOUSTON

UNITED BY PASSION. **H-TOWN** PROUD.



CMOC/Houston Healthcare FIFA Update

June 18, 2026



ONE CITY. ONE GOAL.

ONE WORLD.



DAY #8 of World Cup



Agenda



- Activities and stats from previous 24 hours (6/17)
- Activities for today (6/18) and next 24 hours
 - Fan Fest opens 9:30a
 - 11a Czechia vs. South Africa
 - 2p Switzerland vs. Bosnia-Herzegovina
 - 5p Canada vs. Qatar
 - **8p Mexico vs. Korea Republic**
- Situational updates/changes/weather
- Reminders
- Questions/Concerns

Activities/Stats: 6/17/2026

- Fan Fest:
 - Crowd – 5,079 peak @ 2135 (15,427 total)
 - 19 medical contact, 6 MMU pts w/2 transports
- Stadium:
 - Crowd – 63,878
 - Arrest: 4
 - Physical security: 4
 - Medical: 4 contact, 4 transported, w/1 staff medical
- Mile March Patients: N/A (06/20/2026 1st in Houston)
- HFD transports: x
- Other location patients: unknown
- Hospital reported patients: 6



Update for yesterdays call...

- **City of Houston** facilities: will be available for cooling purposes during their normal business hours throughout this week. Residents are encouraged to utilize city facilities such Community Centers and Multiservice Centers, Libraries as needed to seek relief from the heat.
- **Thursday, Fort Bend County** libraries will be open normal business hours and will be promoted as cooling centers.
 - **Not confirmed**, potentially Friday, Attack Poverty may be open 12 PM – 6 PM @ Attack Poverty | Friends of North Rosenberg (1908 Avenue E, Rosenberg, TX 77471).





Activities

6/18/26

- **Houston** – *“Where soccer meets Texas sized operations, logistics, and hospitality”*
 - DRC at training facility (Houston Training Center)
 - Go Tejano Day @ Fan Fest
 - 11a Czechia vs South Africa
 - 2p Switzerland Vs Bosnia-Herzegovina
 - 6-9p Blanket Bingo @Market Square
 - 7p Nate Bargatze @ Toyota Center
 - 7-10p Watch party @ League City Ballpark
 - 8p Mexico vs South Korea
 - Shell Energy open for Mexico game
 - 10p – 2a Deorro Concert @ Pitch Live



INTERNATIONAL PANIC DAY!!!

Road Closures and Traffic

- Closures may begin as much as 6 hours before the game and 2 hours after the game ends. This will affect staff arriving and departing from their shifts.
- *Slow spots to watch west/south Loop 610 (especially near the stadium), I-45 South from downtown toward NRG, US-59, and Texas 288. Secondary roads near NRG like Bellaire, West University, South Main, Fannin, and Richmond Ave*
- HPD will establish the official perimeter, we suggest you expect security perimeters similar to Rodeo or Super Bowl – these may include full or partial closures on match days of:
 - Kirby Drive (especially near McNee Rd and Westridge),
 - Fannin Street near the stadium perimeter,
 - Murworth Drive,
 - Lantern Point Drive,
 - Stadium Drive / NRG Park





- Each march route broken into three separate sectors. This allows one sector to be open allowing traffic to continue to flow until we need to close it off. This will alleviate traffic in and around the medical center.
- The Netherlands will begin their march at **0845** hours from Rice University. HPD has worked with the organizer and Rice to separate the ticketed from the non-ticketed prior to the march. The non-ticketed will either return to Rice or take the train from Colonnade (Smith Lands Station). The ticketed will continue to NRG. The expected time from beginning to end will be about 45 minutes to an hour. It is important to note once the group has passed sectors, they will reopen to allow traffic to pass through. Most importantly the march will be stopped to allow emergency traffic to pass through it needed.
- Sweden will begin their march at **0930** from Helix Park. The non-ticketed will be instructed to turnaround at a set location while the remainder continue to NRG. HPD will hold traffic once again for those participants who return to Helix and then reopening the route as we pass. Expected time from beginning to end is about 45 minutes.
- Avoiding Greenbriar from University all the way to Fannin and Cambridge from East Road from 0845 until approximately 10:30 will probably be best however, HPD will work with EMS and people who need to get through. Both organizers understand and we will be in position to halt the march if needed to allow for traffic to traverse if needed. Please let me know if you have any other questions. Thank you for your partnership and help.

Walking Route: Rice University to NRG Stadium



Walking Route: Helix Park to NRG Stadium





NATIONAL WEATHER SERVICE

NATIONAL OCEANIC AND ATMOSPHERIC ADMINISTRATION

Dangerous Heat Expected

Latest info at weather.gov/houston



Heat Advisory in effect
from 11 AM Thursday - Friday Evening



Expected Temperatures

→ High Temps: 90°-95°F
32°-35°C

→ Heat Index: 107°-112° F
41°-45° C



All of Southeast Texas



Stay hydrated



Limit strenuous time outdoors in the afternoon



If you have AC, use it. Fans may not be adequate



Wear light-weight, light-colored clothing



HEAT ADVISORY AREA



NATIONAL WEATHER SERVICE
HOUSTON/GALVESTON

Follow: @NWSHouston

Updated: June 17, 2026

National
Weather
Service

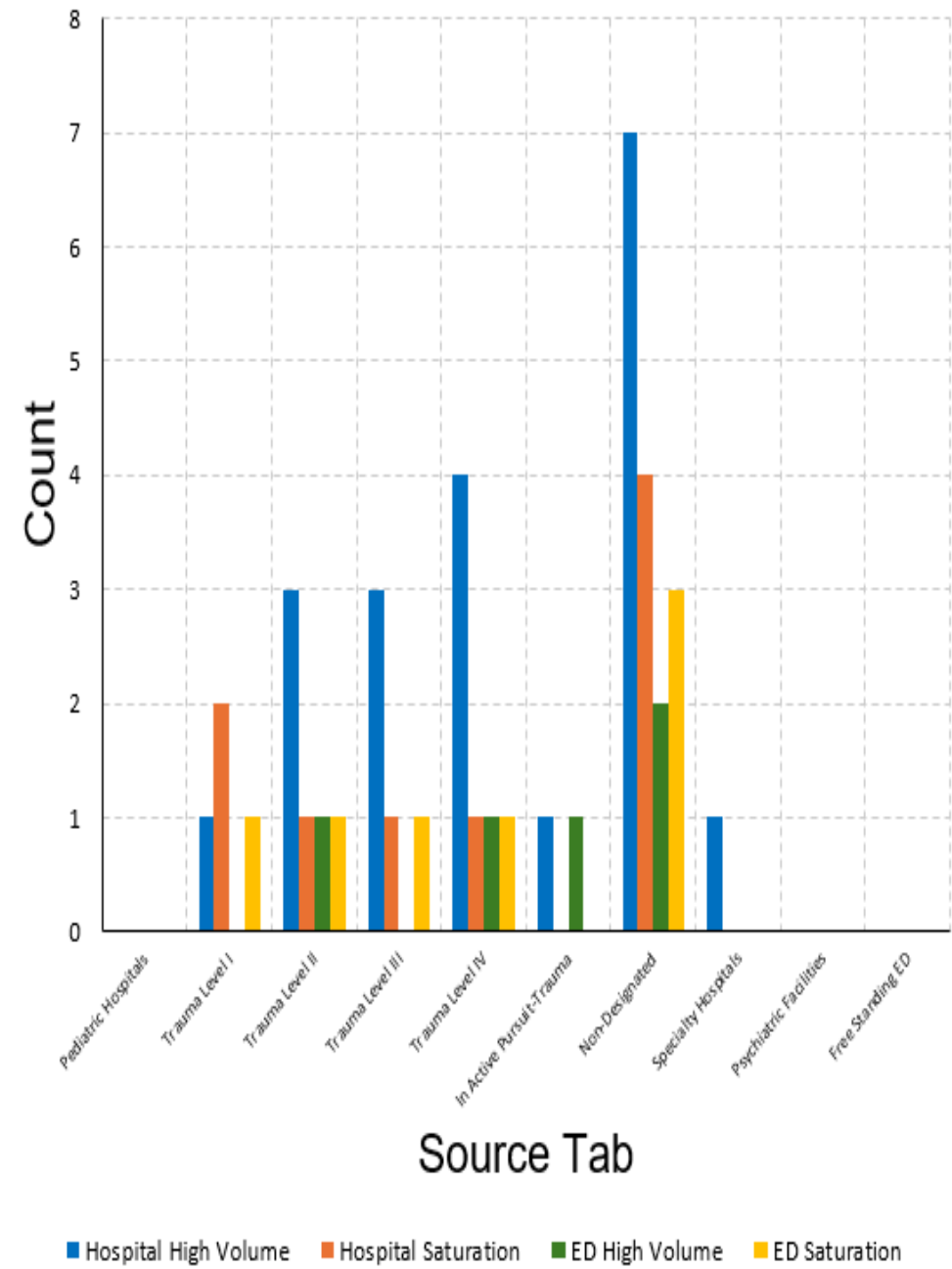


NATIONAL WEATHER SERVICE

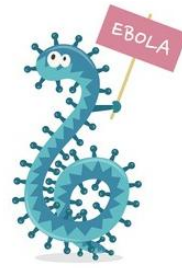
NATIONAL OCEANIC AND ATMOSPHERIC ADMINISTRATION

Status Pivot Summary Region Q-H-R

Source Tab	Hospital High Volume	Hospital Saturation	ED High Volume	ED Saturation
Pediatric Hospitals	0	0	0	0
Trauma Level I	1	2	0	1
Trauma Level II	3	1	1	1
Trauma Level III	3	1	0	1
Trauma Level IV	4	1	1	1
In Active Pursuit-Trauma	1	0	1	0
Non-Designated	7	4	2	3
Specialty Hospitals	1	0	0	0
Psychiatric Facilities	0	0	0	0
Free Standing ED	0	0	0	0
Total	20	9	5	7



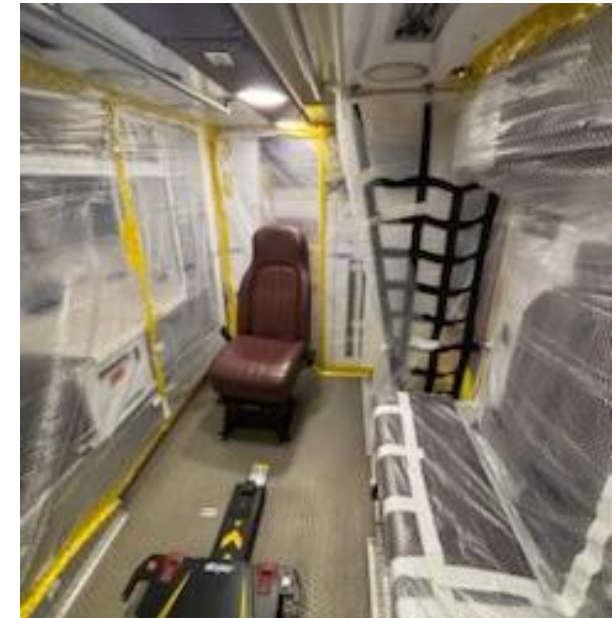
Ebola Updates



- As of June 16th – DRC has 837 confirmed cases w/196 confirmed deaths
- Uganda reported 19 confirmed with 2 confirmed deaths w/ 1 probable case and 1 probable death
- No confirmed in the US

RISK TO PUBLIC REMAINS LOW!

- As of the report on 6/17/2026:
 - 264 PUM in Texas
 - 51 in SETRAC 25 county region (19%)
 - **Regional IDRU plans in place**



Reported PUMs in Texas by Country of Travel

Countries	# of PUMs	% of PUMs
Democratic Republic of Congo	63	25.0%
South Sudan	7	2.8%
Uganda	174	69.0%
Multiple Countries	8	3.2%
Grand Total	264	100.0%

FIFA MISSING PERSONS REPORT

Should someone arrive at your facility looking for a sick or injured person. (Related to the FIFA World Cup)

We are providing access to a form that is available in multiple languages to assist with reporting a missing person.

NOTE: This is meant to be utilized if the missing person is presumed to be part of the FIFA event, as either a participant or a fan.

Steps to follow if someone comes to your facility looking for a missing person:

1. Determine if the missing person is at your facility and follow your normal process for reunification if they are located at your facility.
2. If they are not at your facility, utilize the missing persons form found at this URL.

Questions? Hospital can contact SETRAC by calling our on-call duty officer (281) 822-4444 Option 2, or email cmoc@setrac.org



Or this QR Code can be provided for ease of access on a mobile device. The reporting party can leverage this QR Code if necessary as it can be changed to multiple languages and allows for uploading pictures of the missing person etc.

SETRAC FIFA Missing Persons



Reminders

- Pulsara
- CMOC email: cmoc@setrac.org
- CMOC 24/7 number: 281-822-4444 option 2



Questions/Concerns



- CMOC@setrac.org
- 281-822-4444
option 2