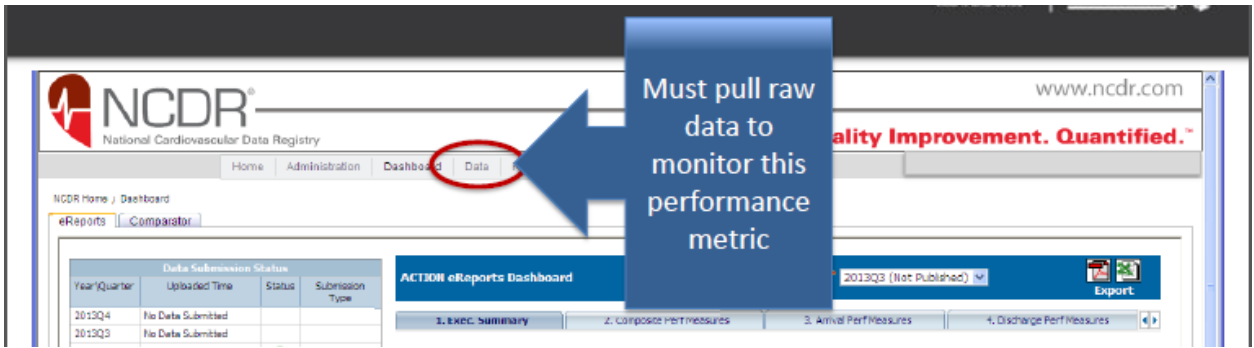


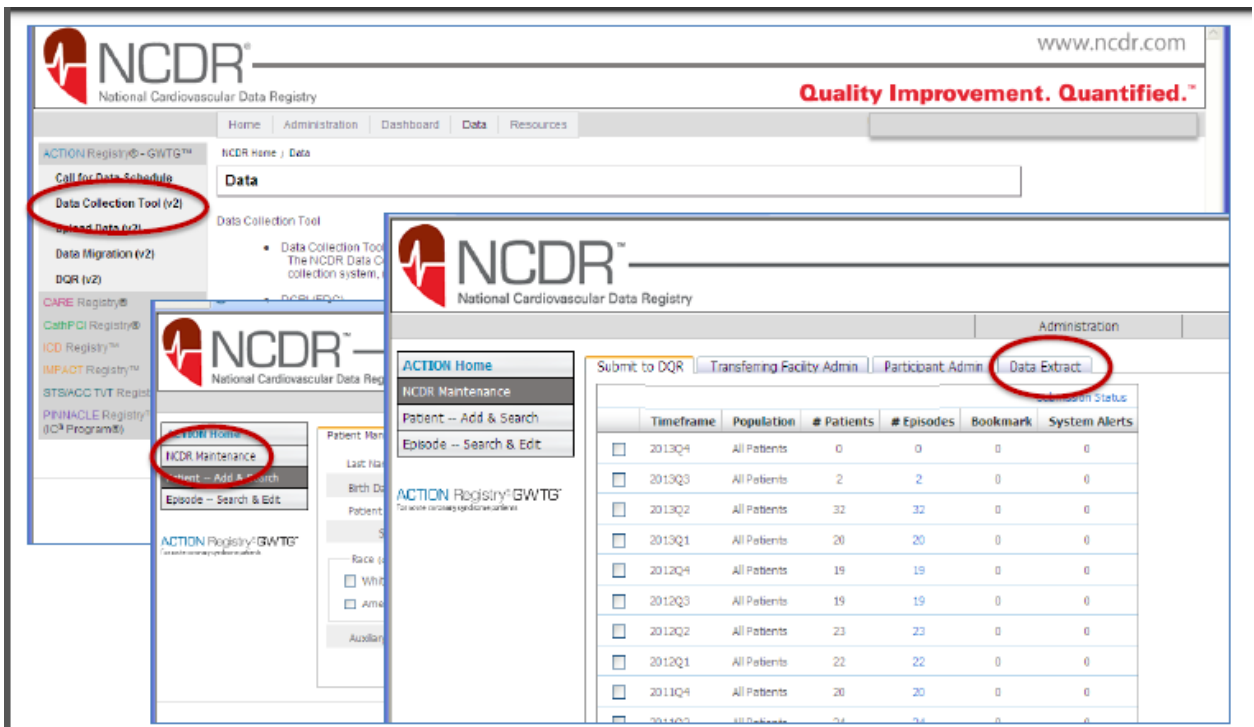
Mission: Lifeline Regional Report ECG within 10 Minutes of Arrival Measure Drill-Down Instructions

STEP 1: Perform a data download of the required elements

- Log in to Action Registry
- Select Data on bar at the top of the page



- Select Data Collection Tool (v2) on the menu on the left side of page
- Select NCDR Maintenance on menu on the left
- Select Data Extract tab at the top



- Select Discharge date
- Select Full Data Extract (very last option)
- Highlight the fields you wish to download (left click and control at the same time)

Hospital-Level Process Measure (pages 7-8)		
Variable	Definition	Inclusion/Exclusion Criteria
ECG within 10 Minutes of Arrival	<ul style="list-style-type: none"> • Transferred from Outside Facility - No • Means of Transport to First Facility - Self/Family • First ECG Obtained - After First Hospital Arrival • % ECG within 10 minutes of arrival (current quarter) 	<ul style="list-style-type: none"> • All STEMI patients who have a reported date/time of ECG <u>after</u> arrival, excluding transfers in and patients with arrival to first ECG > 12 hours. • Includes direct presenters arriving via POV only.

- 3100 Means of Transport to First Facility
 - 3110 Transferred from Outside Facility
 - 3200, 3201 Arrival Date/Time
 - 4010 First ECG Obtained
 - 4020, 4021 First ECG Date/Time
 - 4030 STEMI or STEMI Equivalent
- Click on Download Extract

The screenshot shows the NCDR National Cardiovascular Data Registry interface. The 'Data Extract' tab is active. The 'Select Discharge' field is set to 'from 04/01/2013 (mm/dd/yyyy) to 06/30/2013 (mm/dd/yyyy)'. The 'Select an Extract' dropdown is set to 'Full Data Extract'. The 'Select Elements' list includes: 3100 Means of Transport to First Facility, 3105 Pre-arrival First Medical Contact Date, 3106 Pre-arrival First Medical Contact Time, 3107 Pre-arrival First Medical Contact Time Estimated, 3110 Transferred From Outside Facility, 3115 Means of Transfer, 3120 Arrival at Outside Facility Date, 3121 Arrival at Outside Facility Time, 3122 Arrival at Outside Facility Time Estimated, 3125 Transfer From Outside Facility Date, 3126 Transfer from Outside Facility Time, 3127 Transfer From Outside Facility Time Estimated, 3150 Name of Transferring Facility, 3151 Transferring Facility AHA Number, 3201 Arrival Time, and 3210 Admission Date. The 'Select a Download Format' dropdown is set to 'Microsoft Excel'. The 'Download Extract' button is highlighted in red.

You should now have an Excel Spreadsheet with requested fields.

STEP 2: Eliminate Cases Not in Measure Population

Hospital-Level Process Measures (pages 7-8)		
Variable	Definition	Inclusion/Exclusion Criteria
ECG within 10 Minutes of Arrival	<ul style="list-style-type: none"> Transferred from Outside Facility = No Means of Transport to First Facility = Self/Family First ECG Obtained = After First Hospital Arrival % ECG within 10 minutes of arrival (current quarter) 	<ul style="list-style-type: none"> All STEMI patients who have a reported date/time of ECG <u>after</u> arrival, excluding transfers in and patients with arrival to first ECG > 12 hours. Includes direct presenters arriving via POV only.

To narrow your spreadsheet to the cases included in the ECG within 10 Min. of Arrival measure, incorporate the measure inclusion and exclusion criteria by executing the following steps:

STEPS	CORRESPONDING PRE-HOSPITAL ECG DEFINITION OR INCLUSION/EXCLUSION CRITERIA, FROM ML REPORT GLOSSARY
Highlight all entries in which STEMI or STEMI Equivalent = No, and delete	Inclusion: All STEMI patients...
Highlight all entries in which Transferred from Outside Facility=Yes, and delete	Definition: Transferred from Outside Facility = No
Highlight all entries in which Means of Transport to First Facility is <u>not</u> Self/Family, and delete	Definition: Means of Transport to First Facility = Self/Family
Highlight all entries in which First ECG Obtained = Pre-Hospital, and delete	Definition: First ECG Obtained = After First Hospital Arrival
Insert a new column, Door to ECG Time, where Door to ECG Time = First ECG Time - Arrival Time.	Exclusion: Patients with Arrival to First ECG >12 hrs.
Insert a new column, Different Date, where Different Date = First ECG Date – Arrival Date.	
Sort by Different Date. Delete Door to ECG Time for all entries in which Different Date is not equal to 0. Calculate Door to ECG Time individually for these cases, referring to both date and time of Arrival and of First ECG.	
Highlight all entries in which Door to ECG Time is >720min (12hr), and delete.	

Your spreadsheet now shows all cases that enter into the ECG within 10 Min. of Arrival measure. To view your fallouts:

- Sort spreadsheet by Door to ECG Time.
- Values of >10 min. are fallouts.
 - There should not be any negative values for Door to ECG Time. If there are, examine these cases for data abstraction errors.